

BIRKENHEAD COLLEGE NEWSLETTER

140 Birkdale Road, Private Bag 34 911, Birkenhead, North Shore City
Email: office@birkenhead.school.nz—Website: www.birkenhead.school.nz Ph: 09 483 9039 Fax: 09 483 4094

Dear Parents and Friends

Term 2

Issue 6

28 May 2010

We are over halfway through the term, and next week is Senior Assessment Week. This is an important time for formal internal assessments and practice tests. Please talk with your sons and daughters about the importance of their learning and these assessments. Thank you.

New Staff Nau mai haere mai ki a whaea Kataraina Smith he kaiako hou ia o te reo Maori.



A special welcome to Miss Smith, who is our new teacher of te reo Maori. She was a student at Queen Victoria School, Auckland, then completed her B.A. and Graduate Diploma in Teaching at Victoria University. Her first senior school teaching position was at St Patricks College, Wellington, where she taught te reo Maori and English and Social Studies. She has a strong interest in netball and Kapa Haka.

“Tena Koutou e nga whanau o nga tauira Maori. Nga mihi nui, nga mihi mahana. Nga mihi maioha ki a koutou. He mihi poto tenei ki a koutou, kia whakamohio atu kia koutou mena kaore ano au kia tutaki i a koe. Ko tenei na ahau. He uri no Ngati Kahungunu ki Wairarapa, Ngati Awa me Te Aitanga a Hauiti.” (Many greetings to you all, to the whanau Maori I would like to formally introduce myself. My name is Kataraina Smith and I am from the tribes of Ngati Kahungunu ki Wairarapa, Ngati Awa and Te Aitanga a Hauiti.)



A special welcome also to Mrs J Eberly who is our new First Aid / Dean's Assistant. She has worked as a Dental Assistant for Lumino, and with Community Links helping refugees. She is a strong community person, and worked with her husband who was a local Youth Pastor.

SENIOR ASSESSMENT WEEK

This coming week is a week with no other scheduled school commitments for senior students. It is a time for departments to use for an internal assessment if they wish, and also a time when some departments will have practice tests in class for some of the examination Standards at the end of the year. All students are required to be at school for the whole week with the exception of Year 11 students who have no classes on Wednesday. Year 11 will only be at school on Wednesday if they have a Science practical assessment.



Ngaio Garcia 13BT has won a 10 day voyage on the Spirit of New Zealand. She received her award from Steve Alley of G.A.S. fuel outlets. Ngaio thoroughly deserves this award, not just for the winning entry - a short essay on what could be done to make this community better - but for all her work as stage manager for the school production of 'Godspell'.

Ngaio's essay suggested that greater emphasis and facilities for art / culture and music would benefit this community.

Ngaio has always wanted to go on the Spirit and is really looking forward to this opportunity. Many thanks to Steve at Gasoline Alley for their sponsorship.

EX STUDENT NEWS - **Jack Feltham** (2007) who is studying environmental engineering at Auckland University is to do a 4 month semester exchange at the Hong Kong University of Science & Technology. Jack is one of the first New Zealand students to be accepted for exchange by the Hong Kong University which is world renowned for its engineering courses.

CONGRATULATIONS

Simon Cox and **Kelsi Heath** have been selected as part of the Auckland SS team to compete in the NZ Regional Schools Challenge at Queens Birthday weekend. This 3 day event is being held in Auckland forests.

Parents Support Group
Friday 25th June 7.30 pm
Trivial Pursuits Night!

Monday 31 May is Day 6

J O Mathewson Principal

ASSESSMENT WEEK

Week 7 Term 2 2010

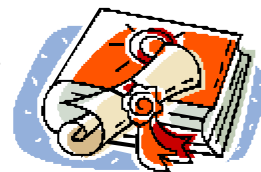
	Monday 31/05/08 Day 6	Tuesday 1/06/08 Day 1	Wednesday 2/06/08 Day 2	Thursday 3/06/08 Day 3	Friday 4/06/08 Day 4
Year 11	Normal Classes + 11TXT <i>C9 (12.30- 3.15)</i>	Normal Classes	11Sci Pract - Yr 11 students only attend when you have an exam. Pract in S8 & S9 <i>Pract 1 (8.45 - 10.15)</i> <i>Pract 2 (10.30 - 12.00)</i> <i>Pract 3 (12.30 - 2.00)</i> <i>Pract 4 (2.15 - 3.45)</i>	Normal Classes	Normal Classes
Year 12	Normal Classes	Normal Classes + 12Phy Practical in <i>S1 & S2 (9-11)</i>	Normal Classes	Normal Classes + 12Che Practical in S5 <i>Pract 1(9-10.30)</i> <i>Pract 2 (11- 12.30)</i>	Normal Classes
Year 13	Normal Classes+ 13Phy Practical in <i>S5 (9-12)</i>	Normal Classes	Normal Classes	Normal Classes	Normal Classes + 13Che Practical in S5 <i>Pract 1 (9-11)</i>
Monday					
All Yr 13 Physics students will have a common assessment from 9-12. All Yr11 Textiles students have a workshop from 12.30 – 3.15. All other students in class. Assessments to occur in class time as and when needed.					
Tuesday					
All Yr 12 Physics students will have a common assessment from 9-11 am Yr12/13 students in class. Assessments to occur in class time as and when needed.					
Wednesday					
Yr 11 All Students at home unless they have a science assessment, in which case they will only be required to be at school for that allocated time slot. Students will be informed by Science teachers of individual times. All other students in class. Assessments to occur in class time as and when needed.					
Thursday					
All students in class. Assessments to occur in class time as and when needed. Yr 12 Chemistry students will have a common assessment from 9 – 10.30 or 11 – 12.30 Chemistry teacher will inform students of exam slot.					
Friday					
All students in class. Assessments to occur in class time as and when needed. All Yr 13 Chemistry students will have a common assessment from 9-12					

NOTE: Could Form Teachers let Science practical classes go before end of form time so that practical can start on time This specifically applies to 12CHE, 13CHE and 12PHY

SCHOOL YEARBOOK

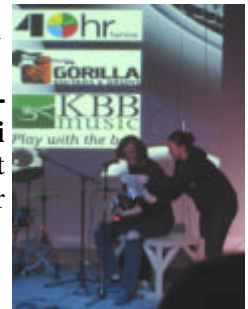
Birkenhead College has always distributed the yearbook to students free of charge. However, increasing financial pressures has forced our hand and from this year we will have to charge for it. The cost will be **\$15 per yearbook**.

More information will be posted to you with your next statement of account.





Last week we had the Battle of the Bands for 2010. We had many great bands from students throughout the school, but ultimately the judges' decision was **Mars' Band**. **Mars Leat** 12BG vocalist, **Greta Snowling-Roach** 12BG bassist, **Leith Towers** 10ML guitarist and **Ete Taulii** 12WT drummer, played a cover of Bombtrack by Rage Against the Machine. They played extremely well and deserved their prize, kindly donated by KBB Music and Gorilla Guitars.



Today we had a performance by a jazz band with our own **Joshua Black** 13MV, and several ex students.

Next week, we have a performance by the Glory Sea, a popular New Zealand rock band. So come along and see the Sea!



1ST XI GIRLS HOCKEY

Last Thursday the 1st XI Girls hockey team played Kristin showing outstanding defensive and attacking skills throughout the whole game. The end result was a 1-1 draw, with Kristin scoring in the last minute of the



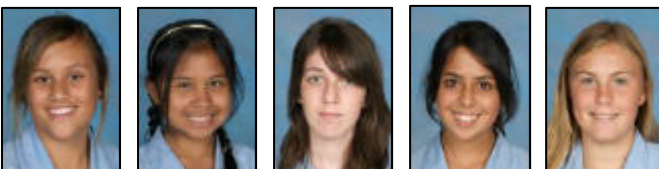
game. Great goal deflection by **Brooke Frankham** (left) on the left post that was set up by **Hannah Mathieson**. Well done girls, keep it up!



GIRLS 2ND XI HOCKEY vs ALBANY JUNIOR HIGH

We lost 4—2 but what a game and what a huge step up in skills and team play. The players and spectators were oblivious to the terribly wet conditions. It was true to the end, exciting stuff. Special mention this week for **Cheyenne Tugaga** in goal, midfielders and human dynamos **Lydia Naguib** and **Jeanne Acosta** and our two new players and goal scorers **Melanie Bracewell** and **Jodi McLaren**. We look forward to next week's game against Takapuna.

From left — Cheyenne Tugaga, Jeanne Acosta, Melanie Bracewell, Lydia Naguib, Jodi McLaren



NCEA PERFORMANCE EVENING



Our second performance evening for NCEA students was held on Wednesday night in the BGT. We heard a range of great performances from students in Years 11, 12 & 13.

Thank you so much to all the parents, friends and staff who came along. This is a fantastic opportunity for our students to perform to an audience in a formal setting.



Our next performance evening is in week 10 this term. We will be hearing a lot of group performances, including everything from rock bands to string quartets. We look forward to seeing as many of you there as possible.

GAMES TO SUPPORT

Week 6

Rugby	1st XV	vs	Kingsway	12:00 Silverdale 3
	3rd Grade	vs	Massey	9:30 Home
	5th Grade	vs	Orewa	10:40 Home
	6th Grade	vs	Northcote	9:30 Northcote
Hockey—Boys Wednesday	1st XI	vs	Kingsway	5:00pm Sand
Hockey—Girls Thursday	1st XI	vs	Rangitoto 3rd XI	5:00pm Rangi
	2nd XI	vs	Rangitoto Jr	4:00pm Sand
Soccer—Boys	1st XI	vs	Sancta Maria	10:00 Sancta Maria
	2nd XI	vs	Long Bay	10:00 Home 1
	Year 9/10	vs	Westlake Zutic	9:00 Home 1
Soccer—Girls Wednesday	1st XI	vs	Orewa	4:00pm Home
	2nd XI	vs	Rangitoto 4	4:00pm Home
	Junior	vs	Takapuna Gold	4:00pm Navy Base 1
Basketball Boys	Fri A Boys	vs	Kristen	7pm NSEC 1
	Friday U17A Boys	vs	Westlake C	4pm NSEC 2
	Thursday U17B Boys	vs	Bye	
	Wednesday U15 Boys	vs	AJHS	4:45pm NSEC 4
Basketball - Girls	Friday A Girls	vs	Mahurangi	9pm NSEC 4
	U17	vs	Carmel	4pm NSEC 3
Squash	Boys Snr 1	vs	Rangitoto	4:00pm Beachhaven
	Girls	vs	St Dominics	4:00pm N/s YMCA
	Boys Jnr	vs	Westlake	4:00pm Beachhaven 1
Netball	Team 1	vs	Whangaparaoa	9.45am Ct 5
	Team 2	vs	Whangaparaoa	11.15am Ct 5
	Team 3	vs	Kingsway	11.15am Ct 15
	Team 4	vs	Kingsway	12pm Ct 14
	Year 9/1	vs	Long Bay	9am Ct 12
	Year 9/2	vs	Carmel	8.15am Ct 20
Curling (Thursday)		vs	Training	Avondale 7pm
Waterpolo (Thursday)	Juniors	vs	Westlake	7.45pm Millennium Pool

TOP TEAMS THIS WEEK

Congratulations to the following teams who had good wins:

Rugby 3rd grade beat Rosmini 22—7

Boys 1st XI **Hockey** beat Kristin 2 –1, and also Glenfield 1—0

Basketball U17B boys beat Northcote 24—10

Squash Junior Boys beat Long Bay 3—1

Netball team 2 beat Takapuna 23—20

Curling BC-Adviento beat EGGS 7—0

