



BIRKENHEAD COLLEGE

where everybody is somebody



SECONDARY SCHOOL OF THE YEAR 1999

P R O S P E C T U S

a school that gets results

Dear Parents

Welcome to Birkenhead College. We look forward to working with you and your child over the very important years ahead.

Birkenhead College is a co-educational school with a roll of approximately 800 students. It is an attractive environment with well laid out buildings and amenities set in very pleasant grounds. The College offers excellent facilities, many of which are also used by the community around us.



At Birkenhead College we have high aspirations for our students and a commitment to developing the full potential of every student. We place a high priority on academic attainment and on developing self esteem, initiative, creativity and personal responsibility. Our highly qualified staff are dedicated to their role in preparing students well for the future in a proven learning environment. The College has a consistently strong academic record and is proud of its significant successes in sport, cultural and community activities.

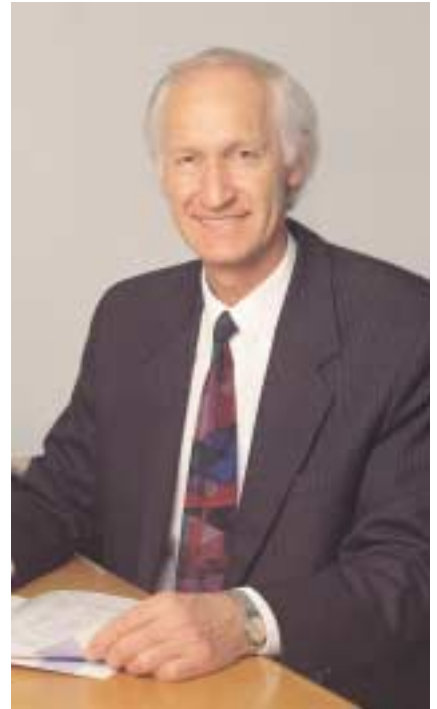


The College has a reputation as a caring school. An extensive guidance network exists to monitor and assist with the progress and welfare of all students.

Effective learning cannot take place unless there is an ordered, disciplined environment. We are committed to fair but firm discipline based on commonsense rules which are consistently enforced.

It is clear that students whose parents take an active interest in their school work, gain more from their secondary school years. At Birkenhead College we encourage parents to be involved and we are very proud of our interactive role in the local community.

Jim Mathewson
PRINCIPAL



Jim Mathewson, Principal
B. Sc., Dip. Sci.

Jim Mathewson came to Birkenhead College as Principal in 1987 with a depth of teaching and leadership experience from Hayes Grammar School in London where he was Head of Biology, and Rangitoto College in Auckland where he was Head of Science and Deputy Principal. His own high standards, passion for learning, enthusiasm for sport and music, early career advancement including time as a secondary schools inspector, have played an important part in attracting high calibre teachers to Birkenhead College. Jim was recently awarded a Woolf Fisher Travel Scholarship. He is married, with two children.



BIRKENHEAD COLLEGE

strong academic record

“THERE IS A STRONG FOCUS ON LEARNING. STUDENTS ARE PUNCTUAL TO CLASS AND MAKE GOOD USE OF THEIR TIME DURING LESSONS. THEY ARE RESPONSIVE TO THEIR TEACHERS.”

EDUCATION REVIEW OFFICE (ERO)



GOODMAN FIELDER SECONDARY SCHOOL OF THE YEAR

This national annual award was made to Birkenhead College in recognition of outstanding all-round performance.

A high calibre panel of judges from business, politics, sports and education selected Birkenhead because of its high performance in each of the following categories:

- Academic progress
- Teacher involvement
- Cultural/sporting progress
- Social and environmental programmes
- Fundraising and budget management
- Relationship with the community
- Success story

OUTSTANDING ACADEMIC HIGHLIGHTS 2000/1

- 83% of our students won an A or B University Bursary
- 33 scholarships won in 10 different subjects
- Individual students achieved:
 - 1st in New Zealand in the University Bursary Chemistry examination
 - World trip for outstanding French
 - Russell Mc Veagh Law Scholarship

The consistently high grades achieved by many Birkenhead College students in national examinations speak for themselves. These results lift the performance of all students and have set the benchmarks that the College continues to strive for. Such high performance is a strong reflection of the very high calibre of our teaching staff.

Beyond the core curriculum, the school offers a wide range of subject options.

JUNIOR SCHOOL

Students in years 9 and 10 are placed, largely on their academic ability, into one of three broad bands of classes.

All students must take a set of core subjects: English, Mathematics, Science, Social Studies, Art, Music, Technology, Physical Education, Health and a Language. In addition further options are chosen.

SENIOR SCHOOL

Students in Years 11 and 12 must take six subjects in each year of study. In Year 11 they must take English, Mathematics and Science with three other chosen subjects. English is compulsory at Year 12, and Year 13 students may choose five or six subjects.



INDIVIDUAL ABILITIES

Gifted students may be placed on an advanced programme to extend them in their areas of strength.

A strong Learning Support Centre ensures provision is made for students with learning difficulties.

QUALIFICATIONS

The College has an excellent record in preparing students for all major New Zealand examinations and certificates, including:

- School Certificate/NCEA
- Sixth Form Certificate
- University Bursary
- University Scholarship
- NZEST Scholarship exams
- NZ Mathematics Certificate
- NZQA Unit Standards
- Higher School Certificate
- Goethe Institute
- Alliance Francaise
- External Sixth Form exam
- Australian Maths, English, Science competitions



College Senior Management Team: Roger Lewis, Jim Mathewson, Principal, Rob Page, Jane Stanely

friendship and mutual respect

“THERE IS AN ENHANCED ATMOSPHERE OF MUTUAL RESPECT AND CO-OPERATION BETWEEN THE STUDENTS AND THEIR TEACHERS. THE STUDENTS ARE TOLERANT OF EACH OTHER’S DIFFERENCES AND SUPPORT EACH OTHER IN THEIR LEARNING.”

EDUCATION REVIEW OFFICE (ERO)



Great value is put on the high quality human relationships that are a feature of the school. Birkenhead College is a community secondary school where many students build long lasting friendships.

Because it is a medium sized school your child cannot get lost in the crowd. There is a friendly atmosphere where students and staff get to know each other as individuals. Emphasis on co-operation and respect is high and filters through the entire school. At Birkenhead College everybody is somebody.

NEW CAFETERIA

Student interaction is centred around the spacious cafeteria and adjoining courtyard, providing a focal point and social heart for the school community.



A strong pastoral care network is in place to provide educational, vocational and personal guidance for students. Deans, Form Teachers and an experienced Guidance Counsellor are always available to support and assist. A peer support programme ensures students feel they belong. Year 13 students work with Year 9 students to help them settle well into their new environment.

Our overseas students bring an international dimension to the school which enriches the culture.



technology and skill development



“THE BOARD OF TRUSTEES
ENSURES THAT LEARNING
PROGRAMMES ARE WELL RESOURCED.
AN EXAMPLE IS THE HIGH QUALITY
COMPUTER RESOURCES.”

EDUCATION REVIEW OFFICE (ERO)

As students grow to maturity it is important that they are developing skills that will equip them for the future. The school is well resourced with modern equipment to facilitate skill development. Computers are networked throughout the school with fibre optic cabling, and equipped with the very latest programmes supported by high standards of instruction.

All departments have access to computers and the internet for use in various topics throughout their courses. A full range of evening classes at different levels of computing is offered as part of our community education programme.

We believe creative thinking must be fostered in all students during their secondary education. Problem solving skills are built on and developed to give students the opportunity to find workable solutions to the issues and difficulties that can arise in life.

Birkenhead College has seen impressive results from extending the fine young minds of students. Our first ever team of “Future Problem Solvers” represented the school and New Zealand in the United States, and won their division against students from around the world.



BIRKENHEAD COLLEGE

a rich array of the arts

“THE SCHOOL HAS DEVELOPED A REPUTATION FOR THE QUALITY OF ITS CO-CURRICULAR PROGRAMMES AND MANY PARENTS LOOK FOR HIGH LEVELS OF PERFORMANCE IN THESE AREAS.”

EDUCATION REVIEW OFFICE (ERO)

MUSIC

The College is well-known for its music programmes and participation is impressive. We offer a wide variety of activities including composition, orchestras, concert band, chamber orchestra, choirs, jazz, pop and percussion groups. Music is encouraged at all levels and tuition for most instruments is provided by itinerant tutors. Student achievement in this programme has become a focus for community interaction and involvement through high profile music performances at all levels. In external exams our students have performed consistently above the national average.

ART

The art department maintains an excellent reputation for providing opportunities for students to score highly in national exams, and to succeed in tertiary art courses and art related careers. In University Bursary our students consistently score well above the national average. The large number of students taking art at senior levels is an indicator of an effective art department.

DRAMA

The College has excellent drama facilities with specialist teachers and a 300 seat theatre. The school offers drama courses to students in Year 9, 10 and 12. Our courses are well delivered and students attain high standards. We have a number of very successful school productions every year.

DEBATING AND PUBLIC SPEAKING

Students participate in public speaking at every level and Birkenhead College debating teams compete successfully in interschool competitions.

CULTURE GROUPS

The College encourages students to be proud of their culture and to participate in cultural activities and represent the College in the wider community. Our International Day and Maori Culture group are well known.

CONCERT BAND

60 students playing woodwind, brass or percussion instruments. They participate in major Secondary School Festivals, having twice reached the finals, as well as many school functions and community events. The band regularly travels overseas.

INTERMEDIATE BAND

A preparation group for the Concert Band, for musicians who have been playing for 1-2 years.

TRAINING BAND

For any beginning student playing a woodwind or brass instrument. As well as taking lessons, students are learning how to participate in a band environment.

STAGE BAND

The College 'Big Band'. For advanced members of the Concert Band containing saxophones, trumpets, trombones and a rhythm section.

JAZZ GROUPS

There are 2 groups, selected after auditions. Both groups have made recordings at Radio New Zealand studios.

CHAMBER ENSEMBLES

Small groups for more advanced players preparing for the Secondary Schools Chamber Music Competition.

CHOIR

40 boys and girls are selected for the choir after auditions. Performs at school functions and participates in the NZ Schools Choral Festival.

BARBERSHOP QUARTETS

Talented boys and girls who provide entertainment at various community events. Senior groups have won a number of Auckland competitions.



Flying high in sport

“THE DEDICATION AND EXPERTISE OF THE COACHES AND STRONG PARENTAL SUPPORT HAVE BEEN MAJOR FACTORS CONTRIBUTING TO THE HIGH LEVELS OF STUDENT ACHIEVEMENT.”

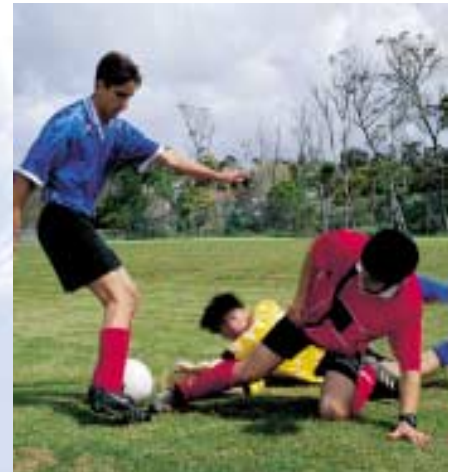
EDUCATION REVIEW OFFICE (ERO)

Birkenhead College has a strong sporting tradition and high level of participation. Students have excelled in a variety of sporting codes.

Our students have been national representatives in athletics, soccer, table tennis, water polo, orienteering and karate. Many have been selected as regional representatives in rugby, soccer, basketball, netball, cricket and hockey.

A full-time sports co-ordinator ensures teams are well managed and coached, and that high standards of fair play are maintained. Many teachers are talented sports people and pass on their enthusiasm and skills to students.

The school has excellent facilities and very well appointed playing fields for rugby, hockey, soccer, cricket, softball and athletics. There is a swimming pool, a well equipped gymnasium, a fitness centre, and eight netball and tennis courts.



springboard to success

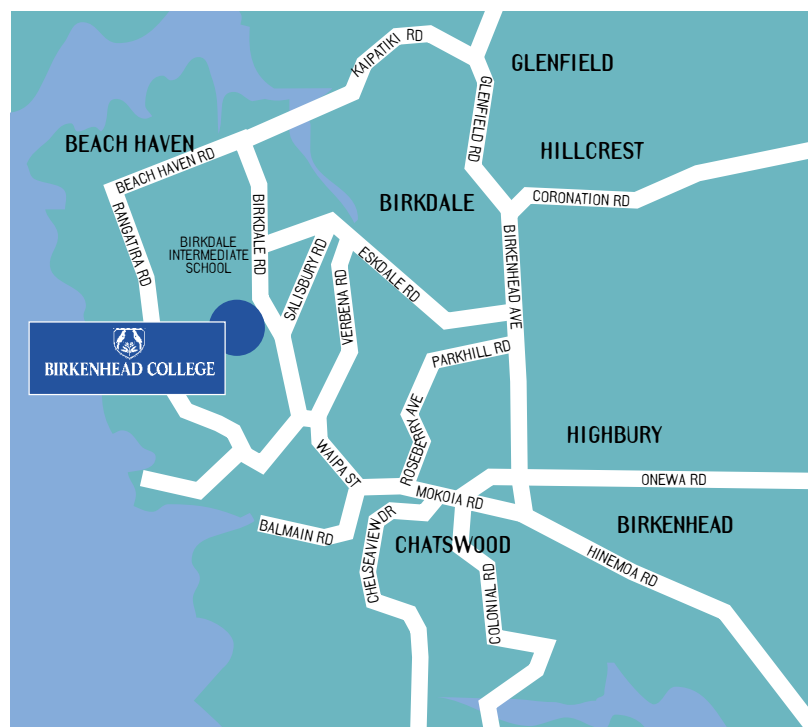
“THE LEARNING CLIMATE IS CHARACTERISED BY HIGH EXPECTATIONS, WIDE LEARNING OPPORTUNITIES, GOOD RESOURCING AND HIGH QUALITY HUMAN RELATIONSHIPS.”

EDUCATION REVIEW OFFICE (ERO)

The secondary school years are a very important grounding for the future. Students at Birkenhead College are presented with many opportunities and given great encouragement to develop the skills and commitment to realise their ambitions. Our senior students go on to higher education and to a wide range of successful careers.

All students are well guided in their study choices and given extensive information on the many career pathways open to them. Our careers and transition team provide information and guidance on any matters which concern future careers and school courses. Link and transition to work courses are available.

In a dedicated and proven learning environment, our students are very well prepared for a successful future.



BIRKENHEAD COLLEGE

where everybody is somebody

140 BIRKDALE ROAD
AUCKLAND 10 NEW ZEALAND
PRIVATE BAG 34911 BIRKENHEAD
TELEPHONE: 483 9039 FACSIMILE 483 4094
EMAIL: office@birkenhead.school.nz
www.birkenhead.school.nz